

THE BEWICK SOCIETY

Thomas Bewick

PROGRAMME OF EVENTS FOR 2024

THURSDAY 25 APRIL 2024

AGAINST THE GRAIN: A PROJECT BY RUTH EWAN

Zoom Event with Artist Ruth Ewan



Ruth Ewan will give a zoom talk detailing her recent work on the relationship between Thomas Bewick and [Thomas Spence](#) (1750-1814), the leading English revolutionary of his day.

She was commissioned, in 2023, to create 'Against the Grain', an audio essay exploring the friendship between Bewick and Spence.

Ruth describes the essay as: '*The audio essay considers both men as innovative artists; one whose legacy was protected, the other whose ideas were obliterated. It invites listeners to refresh their image of Bewick as a political animal and discover the obscured figure of Spence, an essential and provocative voice from our past with currency in our present.*'

The fifty minute audio file can be downloaded for free at [Against the Grain – Ruth Ewan](#)

The project was commissioned by Newcastle University and the National Trust working in partnership with the Bewick Society.

Ruth Ewan is an artist based in Glasgow. Her work addresses ideas of power and questions representations of time, rebellion and repression. Her work grows from context-specific research resulting in a wide variety of forms including events, public works, performance, writing, large scale installations and print. She is currently one of seven artists exhibiting at the National Gallery as part of the [Fourth Plinth Shortlist Exhibition](#) 2024.

Date and time: Thursday 25 April at 7pm (BST)

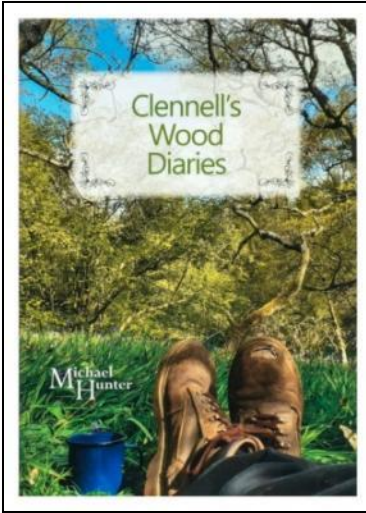
Zoom Venue: Tickets via Eventbrite please at:

[Ruth Ewan, Against the Grain. Tickets, Thu 25 Apr 2024 at 19:00 | Eventbrite](#)

SATURDAY 27 APRIL 2024

A VISIT TO CLENNELL'S WOOD

Hosted by Michael Hunter



In 2020, local author [Michael Hunter](#) acquired a peaceful fragment of Northumberland's ancient woodland.

Named after [Luke Clennell](#) (1781-1840) the wood sits in a landscape which would have been well-known to the Bewick apprentice, wood engraver and artist. Clennell was born in nearby Ulgham and lived for a time at Tritlington.

Michael's passion for the woodland is detailed in his book *Clennell's Wood Diaries*, published in 2021. A recent review states: *It's a lovely little read, including poetry, illustrations and photography.'*

All proceeds from the book sales go to planting new woodlands in the UK.

Join us in investigating the woodland and hearing the story of Michael's journey while remembering one of Bewick's most significant apprentices.

Clennell's Wood is a part of Robin Hood's Wood. Parking arrangements will be emailed to participants. The wood is a short walk from Tritlington, a hamlet four miles north of Morpeth.

Date and time: Saturday 27 April 2024 at 11am.

Venue: Tritlington, Northumberland.

Admission: Free.

Booking: Places are limited. Please e-mail Bewick.Society@ncl.ac.uk to book your place.

SATURDAY 1 JUNE 2024

BEWICK SOCIETY VISIT TO CHERRYBURN, MICKLEY



As [Cherryburn](#) is currently only open to the public on Thursdays and Fridays the Bewick Society is delighted to be able to invite our members to a private viewing of the museum and garden. The property will be open and available to view from noon onwards.

Bring a sandwich and flask and picnic in the newly renovated accessible garden.

Between 1pm and 2pm we will hold an informal conversation in the farmhouse museum: *Exhibiting Thomas*. How has Bewick's life and work been exhibited in the past? What would you like to see in the future? With plans being formed for the two hundred year anniversary of Bewick's death in 2028, this is your chance to influence planning for a landmark year.

Date and time: Saturday 1 June 2024. 12am - 4pm.

Venue: Cherryburn, Station Road, Mickley Square, near Stocksfield, Northumberland NE43 7DD.

Admission: Free.

Booking: Please E-mail bewick.society@ncl.ac.uk to let us know you are coming.

SATURDAY 10 AUGUST 2024

WALKING IN BEWICK'S FOOTSTEPS

A Pilgrimage from Newcastle to Cherryburn



Thomas Bewick was a great advocate of perambulation and when his work was completed he often set out on '*weekly pedestrian flights up the Tyne*' to visit his parents at Cherryburn. His favoured route was along the north bank of the River Tyne crossing the river at Wylam, Ovingham or Eltringham by ferry boat or possibly with the aid of stilts as in this vignette!

If you are up for it, Chairman Peter Quinn is leading a walk from Newcastle to Cherryburn following the River Tyne in emulation of Thomas's weekly route home during his apprenticeship and early career. The walk is around 12½ miles and will be a full day on foot, mostly on the flat but there are a couple of hills to manage at Wylam and Prudhoe.

You will need walking shoes or boots, a packed lunch, snacks for an energy boost, sunscreen and water. While Google Maps suggests the walk should take around four and half hours, expect it to take all day.

Arrival at Cherryburn will be around 4 or 5 pm depending on conditions.

For the return journey trains home are available from Prudhoe Station and buses from Mickley Bank.

Date and time: Saturday 10 August 2024 at 10am.

Venue: Meet at Cardinal Hume's Statue, Bewick Street, Newcastle upon Tyne, NE1 5DB

Admission: Free.

Booking: Please E-mail Peter Quinn peterjquinn67@gmail.com for more information and to book your place.

THURSDAY 10 OCTOBER 2024

THE BEWICK SOCIETY AGM

Please make a note in your diaries that the AGM will be held on this date. The details of the venue and speaker have yet to be finalised.

Date and time: Thursday 10 October 2024.

OTHER NEWS

***NORTHERN PRINT HOSTS THE SOCIETY OF WOOD
ENGRAVERS 86th ANNUAL EXHIBITION
9 MARCH - 26 APRIL 2024***



This year's stunning exhibition featuring the very best of wood engraving will spend seven weeks at Northern Print's Ouseburn Studios.

Works include Leonie Bradley's *Text Prompt: A History of Quadrupeds II* the winner of the 2023 Bewick Prize for a small woodengraving.

The prize is awarded each year by the Society of Wood Engravers selection committee and is funded by the Bewick Society.

If you miss this, further exhibitions are planned in Banchory, Oxford and Thirsk. Check out the [Society of Wood Engravers website](#) for dates.

Date and time: 9 March -26 April 2024. Usual gallery opening times are Wednesday-Saturday 12pm-4pm. But please contact the gallery in advance to confirm opening times.

Venue: Northern Print, Stepney Bank, Newcastle upon Tyne, NE1 2NP

Admission: Free.

'B IS FOR BEWICK' EXHIBITION

21 March – 10 June 2024

A creative journey into the world of Thomas Bewick with [Equal Arts](#)



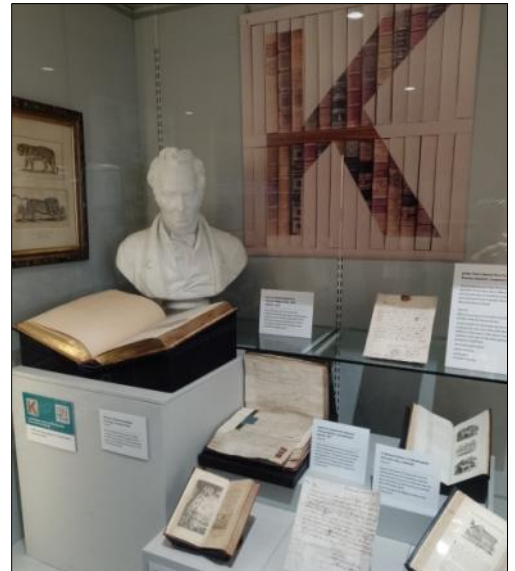
Delve into the treasure trove of artefacts and artwork by world-famous artist Thomas Bewick. Newcastle upon Tyne's extensive Pease Collection has been reimagined by Equal Arts participants working with artists and curators, wanting to make Bewick's brilliance shine.

The new exhibition, entitled *B is for Bewick*, will also showcase the artwork of people aged 55+ living in Newcastle and Gateshead alongside pieces they have curated from the Bewick collection.

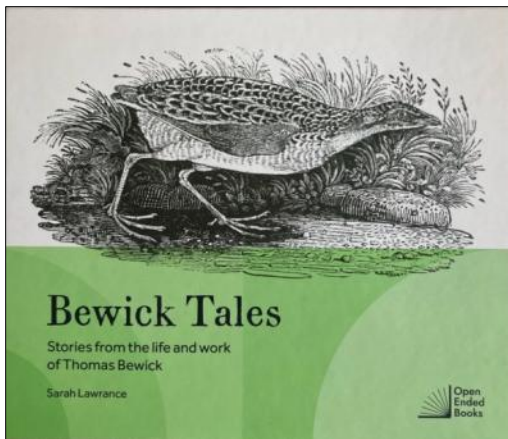
Bewick's workbox, an original vellum proof of the Chillingham Bull and his watercolour of *The White Owl* (Barn Owl) are just some of the highlights.

B is for Bewick is located on Level 6 of Newcastle City Library.

As part of the exhibition, there will be free creative workshops at the City Library on Thursdays from 21 March and Tuesdays from 2 April.



Bewick Tales: Stories from the Life and Work of Thomas Bewick



The Brilliance of Bewick – how one of Northumberland's best-known artists inspired dementia-friendly publishing in Newcastle.

World-famous artist and engraver Thomas Bewick has inspired a new dementia-friendly book created on his home turf.

Bewick Tales: Stories from the Life and Work of Thomas Bewick by Sarah Lawrance, is the first publication from [Open Ended Books](#) a new publishing initiative from creative ageing charity Equal Arts. It draws on the life and

work of Bewick (1753-1828) whose influence can be found across the region in street names, buildings and businesses.

The hardback book, which retails at £15.99, is available from the [Equal Arts website](#).

The book can also be purchased from the shop on Level One of the Newcastle City Library and from [Keel Row Books](#) in Whitley Bay.

You can also place an order by phone on 0191 261 1619.

The Bewick Digital Artist Project

Four commissions have been generated as part of the Arts and Humanities Research Council (AHRC) funded project [On-Site/Off-Site](#) which is led by Newcastle University in partnership with the Bewick Society, National Trust and Arts&Heritage.

The artists involved are [Marcus Coates](#), [Mark Fairnington](#), [Hanna Tuulikki](#) and [Ruth Ewan](#). Mark Fairnington's latest commission has just been released.

Good Morning Mr Bewick by Mark Fairnington



A new digital artwork imagines a conversation with famed Northumbrian naturalist Thomas Bewick (1753-1828). This new digital work reflects upon some of the ways in which Fairnington's and Bewick's thoughts about the Northumberland countryside overlap and connect.

Hethpool Falls by Mark Fairnington

Online viewers of [Good Morning Mr Bewick](#), navigate the piece as a journey, a walk through a landscape divided into three parts - Place, People and Nature.

In 2018, Fairnington responded to Thomas Bewick's birthplace at Cherryburn by walking nearby and painting the contemporary landscape and producing an installation including 16 miniature paintings. These works are featured in Good Morning Mr Bewick.

"This new digital work reflects upon some of the ways in which mine and Bewick's thoughts about the Northumberland countryside overlap and connect," explains Mark Fairnington. "It was a way of looking back at the commission and developing some of the ideas that influenced my thinking about the paintings."

'Scratching the Surface, Thomas Bewick in Newcastle Walk' [Newcastle City Guides Walking Tour](#)



We are delighted that the Newcastle City Guides are reprising their popular Thomas Bewick in Newcastle walk. City Guide and Bewick Society member Anthony Atkinson will once more take the lead alongside his fellow guides to introduce participants to the places where Bewick lived and worked.

This is a walk organised by the City Guides and you should book via their [website](#).

Price: £7 for Adults; £5 Seniors

Date: Sunday 28 July 2024 at 2:30pm

Venue: Meet at Cardinal Hume's Statue, Bewick Street, Newcastle upon Tyne, NE1 5DB

The Chairman of the British Naturalists' Association steps out on a sponsored walk to honour the Northern Naturalist Thomas Bewick.

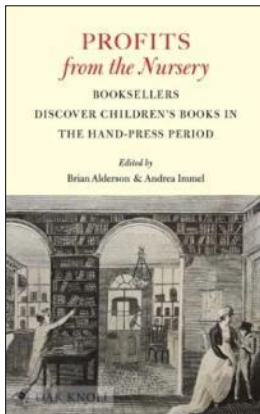


Stephen Rutherford, the Honorary Chairman of the British Naturalists' Association and Bewick Society member will be in Newcastle on 16 May to complete a sponsored walk in aid of a fund to help young naturalists with their education and development. He will be walking from the site of Bewick's home in Gateshead to Amen Corner and then on to Cherryburn, returning in the afternoon back to Gateshead.

If you would like to support his challenge you can donate via the link on the [British Naturalists' Association](#) website.

Stephen grew up on the banks of the River Tyne in Lemington and like Bewick spent many hours enjoying the wildlife and scenery. He recently gave an interesting PowerPoint talk [The Art of a Northern Naturalist](#) which can be viewed on YouTube.

Recent Publications



Profits from the Nursery: Booksellers discover Children's Books in the Hand-Press Period

(London & Princeton, Children's Book History Society & Cotsen Children's Library, 2023).

Alderson, Brian & Andrea Immel (co-editors).

Five essays about innovative publishers for children, 1670-1830. With 142 colour illustrations and a comprehensive index.

Essays by M. O'Grenby, Brian Alderson, Andrea Immel, Nigel Tattersfield etc.

Nigel's chapter is entitled, *Saint or Sinner? Thomas Saint of Newcastle upon Tyne: Printer, Publisher, Pirate* and discusses Bewick's part in illustrating some of Saint's publications. The book has recently been presented with the Harvey Darton Award Prize 2024 for 'extending our knowledge of British children's literature of the past'.

This book is currently only available from Oak Knoll Press (USA) for approx. £35 + postage.

Forthcoming Publications

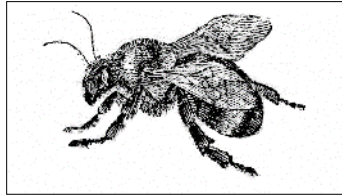
The Florin Press is currently working on publishing two Bewick related titles by Nigel Tattersfield. A [prospectus](#) for both books is available on the [Florin Press website](#).

The exact titles are subject to change:

Bewick Bookplates: A Late Harvest. A Supplement of Drawings, Additions & Amendments to Bookplates by Beilby & Bewick.

From Thomas Bewick to Botany Bay. The Wayward Career of Philip Slager, Convict Engraver.

We will send out an e-mail with further details when the books are published.



Please make sure that we have your most recent E-mail address so we can keep you up to date with the latest news relating to Bewick as well as further details or changes to our events.

Contact: Bewick Society by E-mail at bewick.society@ncl.ac.uk

The Bewick Society
c/o 1A Crossroads
Medomsley
Consett
DH8 6RL